



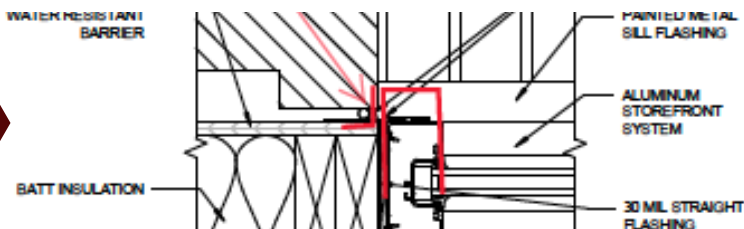
BUILDING ENVELOPE CONSULTING

SK Collaborative helps developers, builders, remodelers, contractors, architects, and homeowners improve building performance through cost-effective techniques.

Our comprehensive building envelope consulting and testing services measure overall performance and provide durability assurance. From early design to mid and post-construction, we help target areas of improvement in your structure's exterior - such as air leakage levels, air/vapor barrier integrity, insulation performance, and energy efficiency.

Our core building envelope services include **plan reviews**, **inspections**, and **testing** - focusing on water penetration resistance, water vapor mitigation, and improving thermal performance.

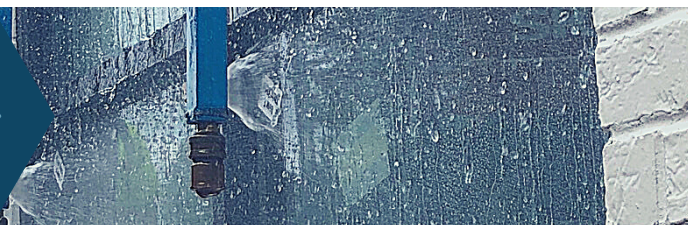
Plan Reviews



Inspections



Testing



For more information or a consultation, visit us online at skcollaborative.com.

CONSULTING | TESTING | ENERGY AUDITS | CERTIFICATION | UTILITY ALLOWANCES

404.480.6400

info@skcollaborative.com

333 Adams Street, Decatur, GA 30303



TOP NINE WAYS TO PREVENT WATER INTRUSION THROUGH YOUR BUILDING ENVELOPE

SK Collaborative has your building envelope consulting needs covered - from plan reviews and site inspections to window and door water leak testing. One of the main drivers of building failures (and subsequent lawsuits) is water intrusion. Do the following nine practices and have confidence that when it rains, the water will stay outside your building.



1

Install kick out flashing where sloped roofs terminate at exterior walls.



2

Properly lap shingle housewrap, lapped 2" horizontally and 6" vertically, seams taped.



3

Hold siding 1-2" off roof surface.



4

Install windows and exterior doors properly, using Home Innovation's helpful [guide for the ICC](#).



5

Install housewrap with plastic cap fasteners – no plain staples or nails.



6

If using a face sealed system such as Zip Sheathing, roll out tape fully (no gaps or folds) and tape or seal any overdriven or removed nails.



7

Seal all pipes, wires, and ducts to weather barrier using flexible tape or manufactured gasket before installing any siding or masonry veneer.



8

Install a vented rainscreen to reduce moisture and vapor intrusion into house and extend life of the siding.



9

Do a complete inspection of the weather barrier before starting any siding installation.

For more on these tips, read the full blog article online at skcollaborative.com/about-us/blog.